

# ***BIOX***

***Stabilized Chlorine Dioxide***

# BIOX

***BIOX is a chlorine dioxide liquid solution, highly pure, with a 0,35% concentration, able to act on:***

- Bacteria
- Mushrooms
- Viruses
- Seaweeds

# BIOX

**Chlorine dioxide is successfully used all over the world for:**

- Legionella prevention and supervision
- Fruit and vegetables washing
- Bottling
- Sport centres health systems
- Poultry farming
- Cooling towers
- Agriculture and fishing farms

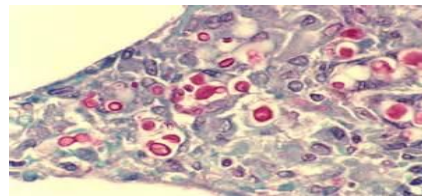
# DISINFECTANT ACTION

**BIOX** is an efficient algaecide, bactericide, fungicide and virucidal definitely more effective than chlorine and traditional chlorine disinfectants.

Particularly suitable to vanquish Legionella, E. Coli, Salmonella, Listeria e Criptoridium



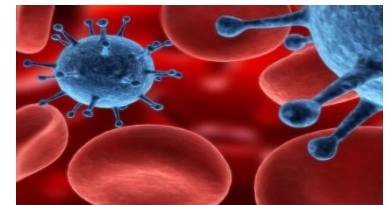
**SEAWEEDS**



**MUSHROOMS**



**BACTERIA**



**VIRUSES**

# FEATURES

It doesn't require reactors, just mix it.

It attacks and destroys both pathogens and biofilm

Chlorite production is negligible

It does not generate harmful by-products (ex. Triahalomethanes)

It's active and effective for at least 30 days long, it ensures long-term disinfection.

# FEATURES

Classic dioxide corrosion problems are related to product concentration: **BIOX** is used with a 0.5 ppm average

In case of shock treatment there's no need to close the structures involved in the treatment

It is stable even to high temperatures (50°)

It is effective in a wide range of temperatures, turbidity and pH (4-10)

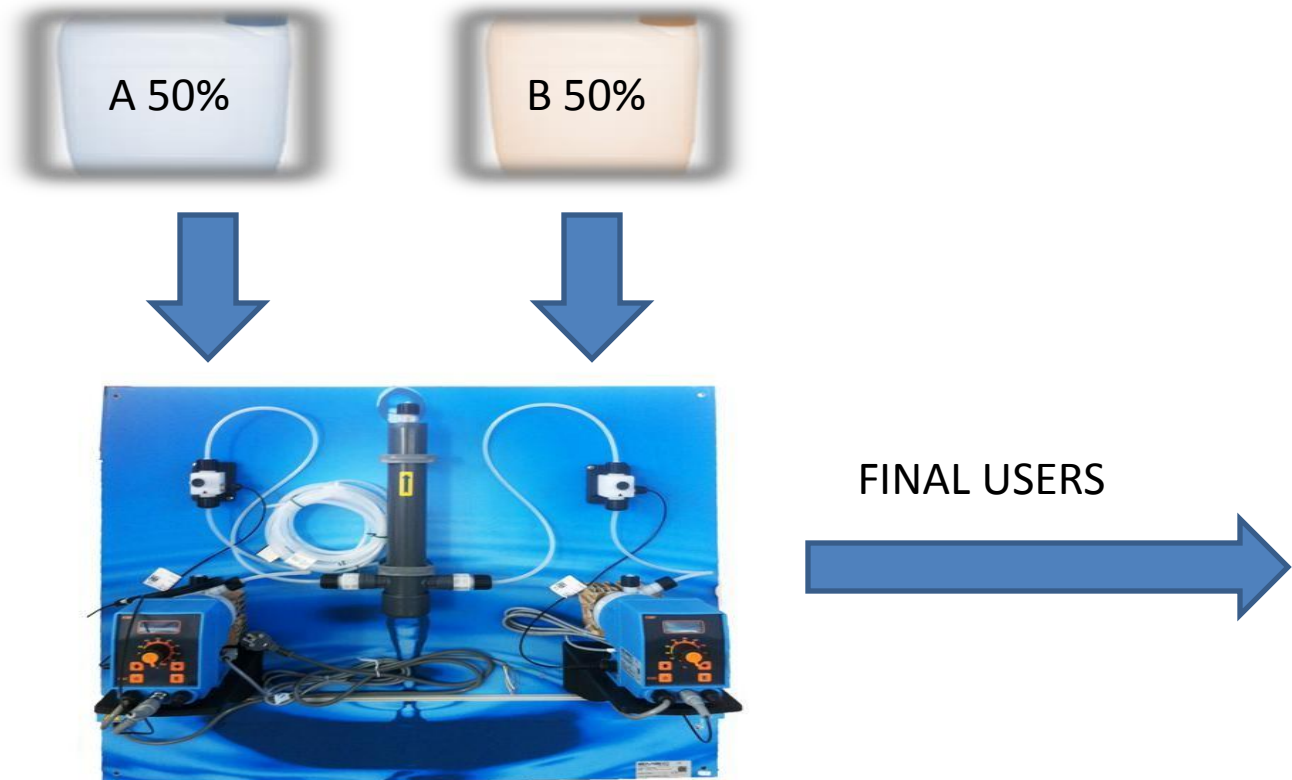
# FORMULATIONS

**BIOX 191:** Product preparation is not required. The two tans must be linked to the dosing mixer pumps and activated. The tans will have to be replaced after exhaustion: the product does not have an expiry date.

**BIOX 9055 :** By mixing the A and B super concentrated components in a tan with 90% water, the 3500 ppm chlorine dioxide, stable for over 30 days, develops.

# Inlet Method

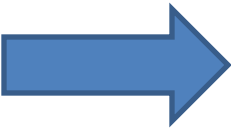
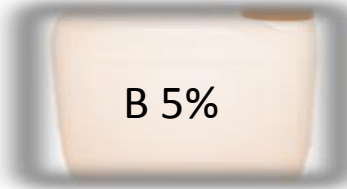
## BIOX 191





# Inlet Method

## BIOX 9055



DOXA SIMPLEX



<b><u>BIOX</u></b>		
<b>3500 PPM SOLUTION WORK VOLUME</b>	<b>PPM</b>	<b>Treated water liters</b>
<b>20 L</b>	0.1	700.000
	0.2	350.000
	0.3	233.333
	0,4	175.000
	0,5	140.000
	1	70.000
<b>100 L</b>	0.1	3.500.000
	0.2	1.750.000
	0.3	1.166.666
	0,4	875.000
	0,5	700.000
	1	350.000



**Gheotech Italia srl**

Via Stefano da Seregno, 55 – 20831 SEREGNO (MB):

[www.g-techsrl.com](http://www.g-techsrl.com) Email: [info@g-techsrl.com](mailto:info@g-techsrl.com)

Tel: +39 0362/1976955